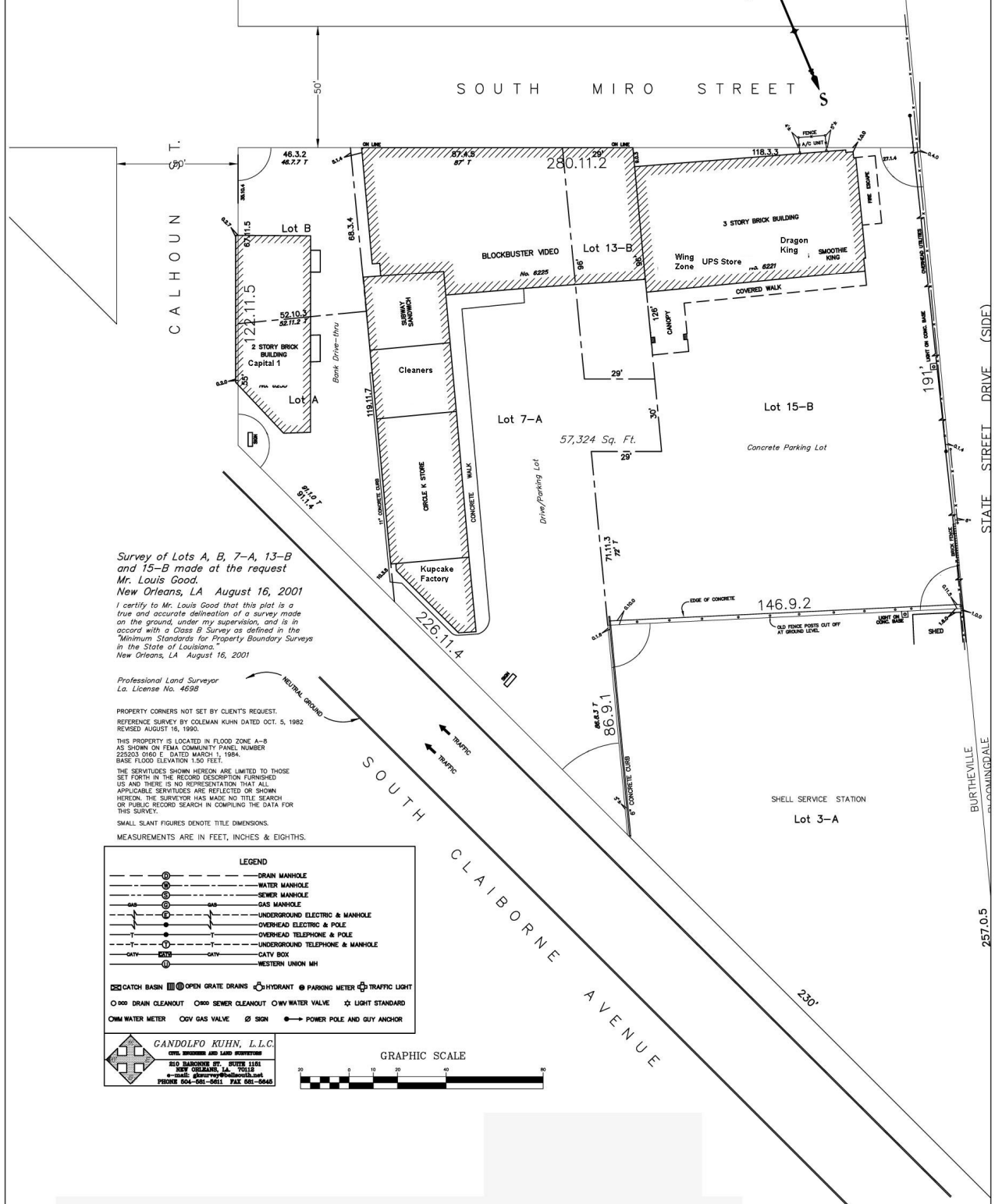


# SQUARE 134 SIXTH DISTRICT BURTHEVILLE



Survey of Lots A, B, 7-A, 13-B and 15-B made at the request Mr. Louis Good.  
New Orleans, LA August 16, 2001  
I certify to Mr. Louis Good that this plot is a true and accurate delineation of a survey made on the ground, under my supervision, and is in accord with a Class B Survey as defined in the "Minimum Standards for Property Boundary Surveys in the State of Louisiana."  
New Orleans, LA August 16, 2001

Professional Land Surveyor  
La. License No. 4698

PROPERTY CORNERS NOT SET BY CLIENT'S REQUEST.  
REFERENCE SURVEY BY COLEMAN KUHN DATED OCT. 5, 1982  
REVISED AUGUST 16, 1990.  
THIS PROPERTY IS LOCATED IN FLOOD ZONE A-8 AS SHOWN ON FEMA COMMUNITY PANEL NUMBER 225203 0160 E. DATED MARCH 1, 1984.  
BASE FLOOD ELEVATION 150 FEET.  
THE SERVICES SHOWN HEREON ARE LIMITED TO THOSE SET FORTH IN THE RECORD DESCRIPTION FURNISHED US AND THERE IS NO REPRESENTATION THAT ALL APPLICABLE SERVICES ARE REFLECTED OR SHOWN HEREON. THE SURVEYOR HAS MADE NO TITLE SEARCH OR PUBLIC RECORD SEARCH IN COMPILING THE DATA FOR THIS SURVEY.  
SMALL SLANT FIGURES DENOTE TITLE DIMENSIONS.  
MEASUREMENTS ARE IN FEET, INCHES & EIGHTHS.

LEGEND	
	--- DRAIN MANHOLE
	--- WATER MANHOLE
	--- SEWER MANHOLE
	--- GAS MANHOLE
	--- UNDERGROUND ELECTRIC & MANHOLE
	--- OVERHEAD ELECTRIC & POLE
	--- OVERHEAD TELEPHONE & POLE
	--- UNDERGROUND TELEPHONE & MANHOLE
	--- CITY BOX
	--- WESTERN UNION MH
	--- CATCH BASIN
	--- OPEN GRATE DRAINS
	--- HYDRANT
	--- PARKING METER
	--- TRAFFIC LIGHT
	--- DRAIN CLEANOUT
	--- SEWER CLEANOUT
	--- WATER VALVE
	--- LIGHT STANDARD
	--- CITY WATER METER
	--- GAS VALVE
	--- SIGN
	--- POWER POLE AND GUY ANCHOR

**CANDOLFO KUHN, L.L.C.**  
CREATING SURVEYS AND LAND INFORMATION  
810 BARRONNET ST., SUITE 1155  
NEW ORLEANS, LA 70115  
PHONE 504-581-0611 FAX 504-581-0645

